

# 2018

## St. John Ambulance Ontario Medical First Responder Competition

### TEAM SCENARIO

### Scenario # 3 – “Fuselage Inferno”

#### Background Scenario

You and your team have arrived at FESTI for a weekend of on-site training opportunities.

While your team is heading off to lesson on the use of fire suppression equipment, there is an alert that two planes have crashed into each on the Pearson airport runways causing a massive incident involving hundreds of potential patients.

The scene has been secured and the plane which was on fire has been extinguished. Your team has been assigned to search the nearby fields for missing passengers from a broken and burnt plane while waiting for more emergency services personelle to arrive at the incident.



You have 20 minutes to complete the scenario, Good Luck!!

*There will be a 3 minute warning signify the end of the primary survey.*

*There will also be a 2 minute left signal for the team's benefit.*

**THIS PAGE IS GIVEN TO TEAMS AT THE BEGINNING OF THE SCENARIO**

## **CASUALTY SIMULATORS INFORMATION - Scenario #3**



***(BACKGROUND – NOT TO BE SHARED WITH COMPETITORS)***

**Location:** Fuselage and adjacent field.

**Overall Scenario for the event:** Two planes have crashed into each other on the Pearson airport runways causing a massive incident involving hundreds of potential patients. The scene has been secured and the plane which was on fire has been extinguished. Your team has been assigned to search the nearby fields for missing passengers from a broken and burnt plane while waiting for more emergency services personnel to arrive at the incident.

**Judges & Casualty Info:** Please Spread your patients out in the field area near the broken fuselage. Casualties were in the plane taxiing along the runway when their plane ran into another one, also taxiing along. The plane you were on, broke apart and people were thrown from the plane. This one erupted into flames and you both were able to escape together, but you have been all alone in this field for about 20 minutes while the first responders were putting out the fire and searching the planes.

### **Scenario Set Up:**

- Total number of patients: 2 patients have escaped the crash, but in their attempts to flee they should be dirty from falling into the grass/ dirt. Dirt smear on their faces and hands, grass stains on the knees, etc.
- Patient #1 - Conscious and sitting in field. You were helping your friend (patient 2) off the plane when there was a sudden explosion and a fire started. You were turned to the side when the explosion happened and now have 1<sup>st</sup> and 2<sup>nd</sup> degree burns on the underside of your left arm (you had your arm up guarding your face) and your left chest with singed clothing on. During the explosion 2 pieces of metal have also embedded in your left lower leg (outer side).
- Patient #2 – Conscious and sitting in field. You struck your face in the crash and think you hurt your eye (extruded) but you are holding/covering it when team arrives) and you think you broke your nose with a slight trickle of blood coming from the right nare. During the exit from the plane, there was an explosion which knocked you over and you also twisted your ankle.

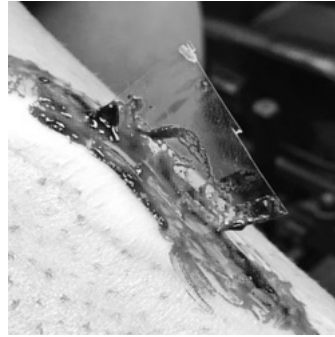
### **Timing Notes:**

- There will be a 3 minute warning to signify the end of the primary survey. Teams will ONLY be able to score points from the first page during the first 3 minutes.
- There will also be a 2 minute remaining signal for the team's benefit.
- Teams will be given 5 minutes after the scenario to complete paperwork while scenario re-set occurs.

**CASUALTY SIMULATORS INFORMATION Patient #1 – “Burns & Embedded obj.”**



**2 X**



**SIMULATION:**

Conscious and sitting in field. You were helping your friend (patient 2) off the plane when there was a sudden explosion and a fire started. You were turned to the side when the explosion happened and now have 1<sup>st</sup> and 2<sup>nd</sup> degree burns on the underside of your left arm (you had your arm up guarding your face) and your left chest with singed clothing on. During the explosion 2 pieces of metal have also embedded in your left lower leg (outer side).

Information	Casualty Simulation Required
<ul style="list-style-type: none"> <li>Conscious, sitting in grass</li> </ul>	<ul style="list-style-type: none"> <li>Make sure patient is conscious and aware of history.</li> </ul>
<ul style="list-style-type: none"> <li>1<sup>st</sup> and 2<sup>nd</sup> degree Burns</li> </ul>	<ul style="list-style-type: none"> <li>Left underside of arm</li> <li>Left side of chest</li> </ul>
<ul style="list-style-type: none"> <li>Embedded Metal in LEFT lower leg</li> </ul>	<ul style="list-style-type: none"> <li>2 separate pieces about 4-5” apart.</li> <li>Minimal bleeding at the site.</li> </ul>

**SAMPLE/ HISTORY:**

**BURNS:**

<b>S</b>	Burn Pain, stinging pain in calf
<b>A</b>	IVP Dye
<b>M</b>	Metoprolol, Crestor
<b>P</b>	High BP + Chloresterol
<b>L</b>	Ate at the airport about 1 hour ago
<b>E</b>	Exiting, caught by explosion

<b>O</b>	– was turned away from explosion
<b>P</b>	– Increases with breathing/mvt.
<b>Q</b>	– Severe burning pain
<b>R</b>	– around arm and back/stomach
<b>S</b>	- 8/10
<b>T</b>	– about 25 minutes before team arrived.

**VITAL SIGNS:**

	<u>1<sup>st</sup> SET</u>	<u>2<sup>nd</sup> SET</u>
<b>RESP.</b>	18 full and regular	18 full & regular
<b>PULSE</b>	120 rapid & full	110 rapid & full
<b>B/P</b>	134/74	122/78
<b>SKIN</b>	Pink/Red, dry & hot	Pink/Red, dry & hot
<b>LOC</b>	Conscious	Conscious
<b>PUPILS</b>	Equal & Reactive	Equal & Reactive

**CASUALTY SIMULATORS INFORMATION**

**Patient #2 – “Facial Injuries”**



**SIMULATION:**

Conscious and sitting in field. You struck your face in the crash and think you hurt your eye (extruded) but you are holding/covering it when team arrives) and you think you broke you nose with a slight trickle of blood coming from the right nare. During the exit from the plane, there was an explosion which knocked you over and you also twisted your ankle.

Information	Casualty Simulation Required
<ul style="list-style-type: none"> <li>Conscious, sitting In field.</li> </ul>	<ul style="list-style-type: none"> <li>Aware of history and SAMPLE</li> </ul>
<ul style="list-style-type: none"> <li>Extruded RIGHT eyeball</li> </ul>	<ul style="list-style-type: none"> <li>Completely extruded RIGHT eyeball, hanging about ½-1” out of socket.</li> <li>Able to see from the eye, NO PAIN!!</li> </ul>
<ul style="list-style-type: none"> <li>Broken Nose</li> </ul>	<ul style="list-style-type: none"> <li>Bruising under both eyes</li> <li>Swelling pad on nose making it look crooked</li> <li>Slight trickle of blood @ RIGHT nare, hard to breathe.</li> </ul>
<ul style="list-style-type: none"> <li>Sprained RIGHT ankle</li> </ul>	<ul style="list-style-type: none"> <li>Slight bruising on outside ankle</li> <li>Pain, increases with touch.</li> </ul>

**SAMPLE/ HISTORY:**

<b>S</b>	Ankle pain, hard to breathe (nose)
<b>A</b>	Shellfish and Pollen
<b>M</b>	Epi Pen ( not with you)
<b>P</b>	Previously Healthy
<b>L</b>	Ate about 1 hour ago In airport
<b>E</b>	Struck face in crash, twisted ankle in escape form plane.

**ANKLE:**

<b>O</b>	– rolled over ankle escaping plane
<b>P</b>	– Mvt increases
<b>Q</b>	– throbbing
<b>R</b>	– No radiation
<b>S</b>	- 4/10
<b>T</b>	– happened about 25 minutes before arrival of team.

**VITAL SIGNS:**

	<u>1<sup>st</sup> SET</u>	<u>2<sup>nd</sup> SET</u>
<b>RESP.</b>	24 shallow, whistling from nare	20 shallow, whistling from nare
<b>PULSE</b>	94 full & regular	84 full & regular
<b>B/P</b>	112/68	112/70
<b>SKIN</b>	Pink, warm & dry	Pink, warm & dry
<b>LOC</b>	Conscious	Conscious
<b>PUPILS</b>	Equal & reactive	Equal & reactive